

BRDI – CODATA Activities: Developing Data Attribution and Citation Practices and Standards

Christine L. Borgman, UCLA

International Workshop on Contributorship and
Scholarly Attribution

16 May 2012

Players and activities

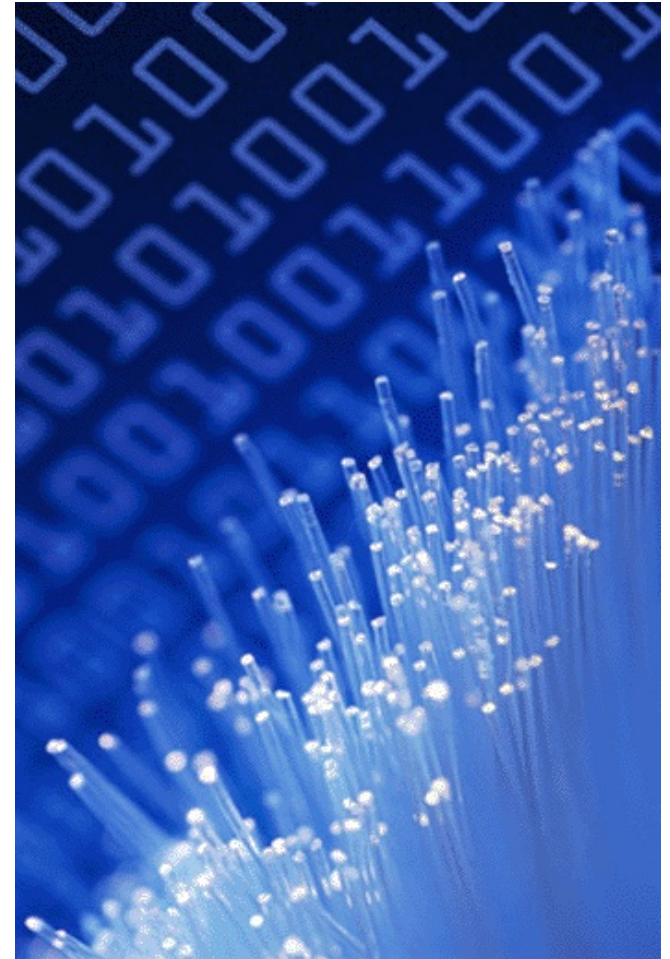
- ▶ **International Council of Scientific Unions**
 - ▶ Committee on Data: CODATA
- ▶ **International Council for Scientific and Technical Information**
 - ▶ Task force on Developing Data Attribution and Citation Practices and Standards
- ▶ **US National Academies of Science**
 - ▶ US National CODATA
 - ▶ Board on Research Data and Information
- ▶ **BRDI – CODATA Symposium: August, 2011, Berkeley**
 - ▶ Symposium report forthcoming from NAS
 - ▶ CODATA-ICSTI Task force work continues
 - ▶ Survey
 - ▶ Meetings, reports

Driving questions for symposium

1. What are the *major technical issues* that need to be considered in developing and implementing scientific data citation standards and practices?
2. What are the *major scientific issues* that need to be considered in developing and implementing scientific data citation standards and practices? Which ones are *universal* for all types of research and which ones are *field- or context-specific*?
3. What are the *major institutional, financial, legal, and socio-cultural* issues that need to be considered in developing and implementing scientific data citation standards and practices? Which ones are universal for all types of research and which ones are field- or context-specific?
4. What is the *status of data attribution and citation practices* in individual fields in the natural and social (economic and political) sciences in United States and internationally? Case Studies.
5. **Institutional Roles and Perspectives:** What are the respective roles and approaches of the main actors in the research enterprise and what are the similarities and differences in disciplines and countries? The roles of research funders, universities, data centers, libraries, scientific societies, and publishers will be explored.

Infrastructure for digital objects

- ▶ Social practice
- ▶ Usability
- ▶ Identity
- ▶ Persistence
- ▶ Discoverability
- ▶ Provenance
- ▶ Relationships
- ▶ Intellectual property
- ▶ Policy



http://datalib.ed.ac.uk/GRAPHICS/blue_data.gif

Social practice

- ▶ **Why cite data?**
 - ▶ Reproduce research
 - ▶ Replicate findings
 - ▶ Reuse data
- ▶ **Why attribute data?**
 - ▶ Social expectation
 - ▶ Legal responsibility
- ▶ **How to cite data?**
 - ▶ Bibliographic reference
 - ▶ Identifier
 - ▶ Link



http://farm2.static.flickr.com/1207/707625876_46aa44851f_o.jpg

Finding and following digital objects

▶ Discoverability

- ▶ Identify existence
- ▶ Locate
- ▶ Retrieve

▶ Provenance

- ▶ Chain of custody
- ▶ Transformations from original state

▶ Relationships

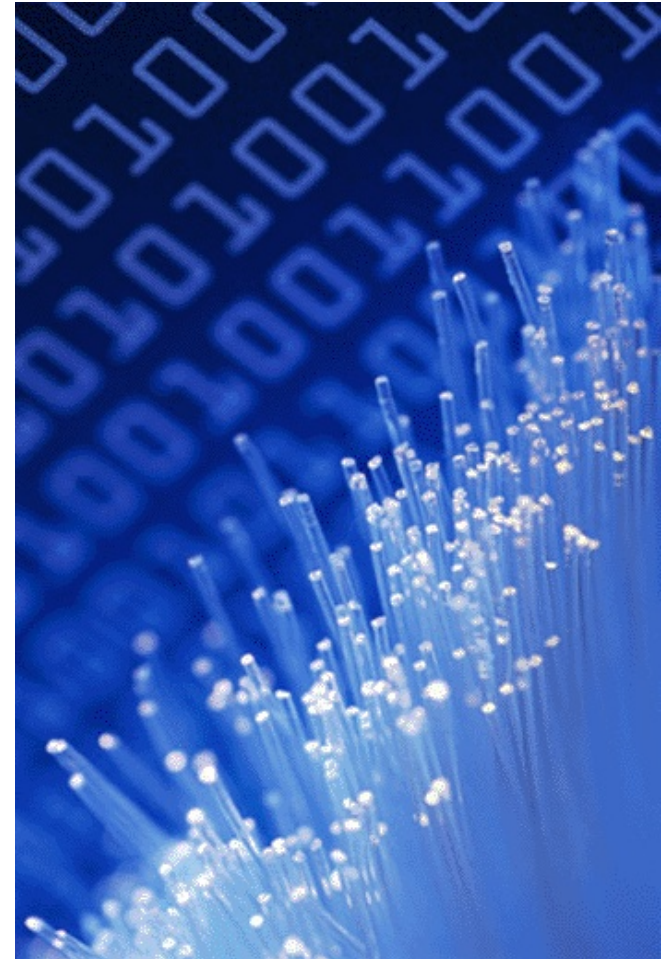
- ▶ Units identified
- ▶ Links between units
- ▶ Actions on relationships



http://chicagoist.com/2008/10/09/a_gourmet_oasis_provenance_food_and.php

Intellectual property

- ▶ What can I do with this object?
- ▶ What rights are associated?
 - ▶ Reuse
 - ▶ Reproduce
 - ▶ Attribute
- ▶ Who owns the rights?
- ▶ How open are data?
 - ▶ Open data
 - ▶ Open bibliography



http://datalib.ed.ac.uk/GRAPHICS/blue_data.gif

Policy for digital objects

▶ Whose policy?

- ▶ Funding agencies
- ▶ Publishers
- ▶ Data repositories
- ▶ Universities
- ▶ Investigators...

▶ Types of policy

- ▶ What to release
- ▶ What description
- ▶ What citation
- ▶ What attribution
- ▶ Who can describe, annotate...



<http://www.dlorg.eu/index.php/publications/ec-policy/ec-publications-policy>

Next steps

- ▶ **Reports**
 - ▶ BRDI/NAS meeting report
 - ▶ Data Citation Best Practices
- ▶ **Future meetings and activities**
 - ▶ CODATA-ICSTI Task Group
 - ▶ Survey of stakeholders
 - ▶ Standardization work

