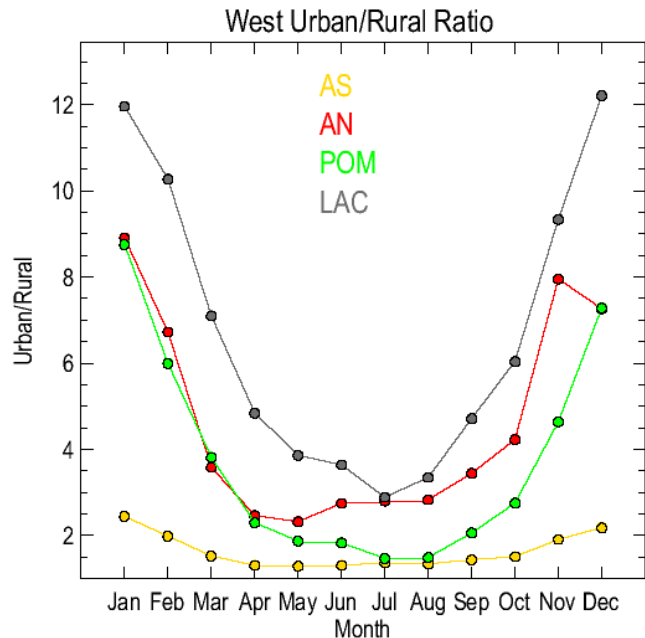


Spatial and Temporal Speciated Aerosol Patterns to Challenge Global/Regional Chemical Transport Models

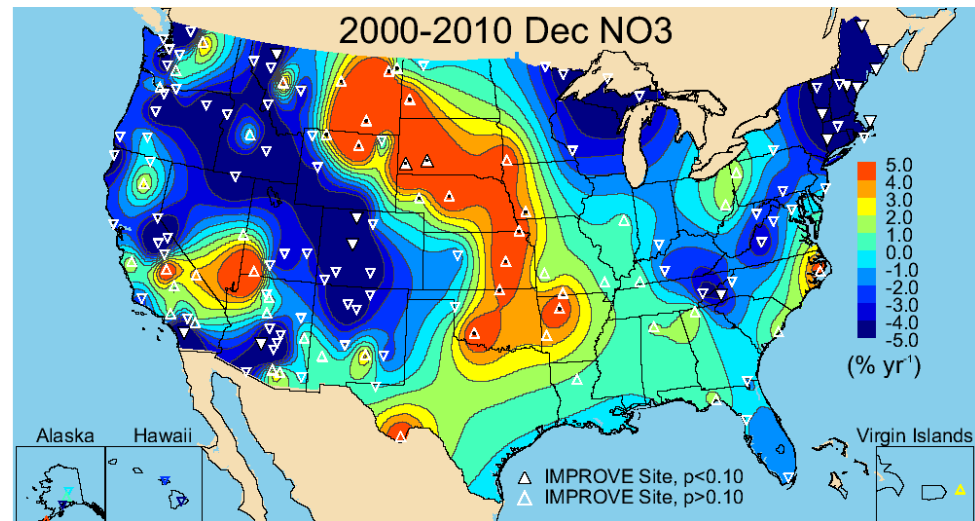
Bret Schichtel¹, Jenny Hand², William Malm², Mark Pitchford³

¹National Park Service ²Colorado State University, ³Desert Research Institute

The “other” aerosol patterns to evaluate chemical transport models



Can the model reproduce the average “urban excess”?



Can the model explain the increasing winter nitrate in the Great Plains?