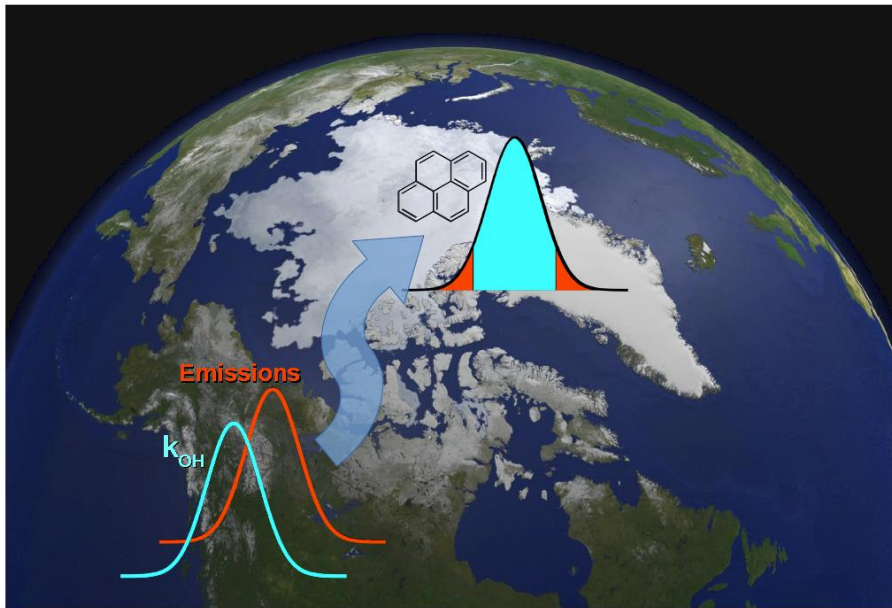


# Parametric uncertainty analysis with GEOS-Chem: Application to PAH simulations

How does uncertainty in the input parameters (e.g. rate constants, emission rates, etc.) translate into uncertainty in model outputs (e.g. concentrations)?



## Response surface model:

a simplified representation of the relationship between input parameters and model output

## You get:

- Quantified uncertainty of model outputs
- Quantified contributions of each input parameter
- Freedom from linearity assumptions
- More!

Poster C1. C. Thackray, C. Friedman, Y. Zhang, N. Selin