



Ivy Plus Libraries Confederation Collections + Resource Sharing

Harvard University Libraries December 4, 2018



Galadriel Chilton

Director of Collections
Initiatives

Based @ Yale

Works with the **Collection
Development Group** on
Collaborative Collections
Initiatives

galadriel.chilton@yale.edu



Heidi Nance

Director of Resource Sharing
Initiatives

Based @ Penn

Works with the **Resource
Sharing Group** on
Collaborative Resource
Sharing Initiatives

hnance@upenn.edu



**What are the
partnership's
strategic
priorities?**



- *What we have been doing as Ivy Plus has been terrific and great, but we are crossing a threshold into a much more formal collaboration....For us, Ivy Plus is key to our strategy....That means as we develop our collections, we're doing it in thinking about the Ivy Plus consortium. As we are providing access and knowledge of what's in our collections we want to think about the Ivy Plus collections as we do our local collections.*
 - *Susan Gibbons
Stephen F. Gates '68 University Librarian Deputy Provost,
Collections & Scholarly Communication
[Yale Ivy Plus Libraries Forum, September 21, 2018](#)*



- ***Strategic Priority 3:***

Actively pursue strategic collaborations that mutually benefit the Library, the University, and the broader cultural heritage community and promote the democratization of information.

- ***Strategic Objective 3.1***

*Work with selected partner institutions (inside and outside the **Ivy Plus**) to extend collective collecting initiatives.*

<https://library.princeton.edu/about>

Who are the members?

1. Brown
2. Columbia
3. Cornell
4. Dartmouth
5. Duke
6. Harvard
7. Johns Hopkins
8. MIT
9. Princeton
10. University of Chicago
11. University of Pennsylvania
12. Stanford
13. Yale



How do all the groups fit together?

13 University Librarians

Strategic Priority Groups

- Collection Development
- Resource Sharing
- Leadership and Advocacy in Scholarly Communications

Key Stakeholder Groups

- Assessment
- IT
- Technical Services

Affinity Groups

- [15 Groups](#)

Definitions

Program - A UL-approved, established operation with dedicated staff (e.g. BorrowDirect, Web Collecting Program).

Initiative - A UL-approved (by 10 or more ULs), or working towards seeking UL-approval, cross-institution effort supported by the in-kind contributions of multiple staff at Ivy Plus Libraries institutions and may also include the work and time of an Ivy Plus Libraries staff member. All initiatives come to the ULs through a strategic priority group (Resource Sharing Group, Collection Development Group, and Leadership & Advocacy in Scholarly Communications Task Force) and support one or more of the three strategic priorities:

1. Resource Sharing / BorrowDirect
2. Data-Informed and Evidence-Based Collaborative Collection Development
3. Leadership & Advocacy in Scholarly Communications

Project - Smaller than an initiative, a project may improve existing programs, support an initiative, improve group operations, or be an exploratory effort preceding an initiative, and is completed by a few. Projects are typically led by an Ivy Plus Libraries staff member and under the purview of an Ivy Plus Libraries Group.

Collection Development

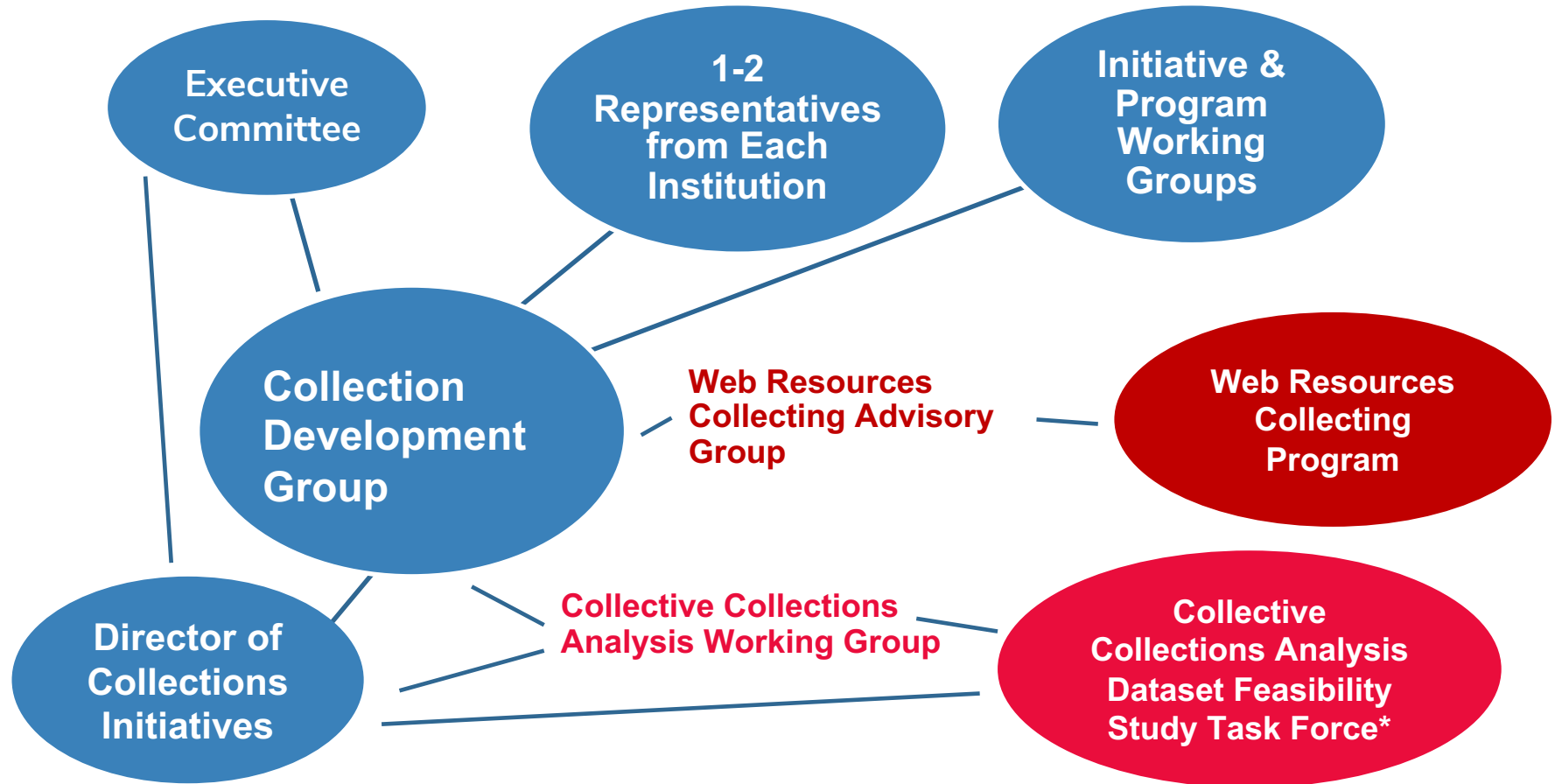
Galadriel Chilton

Director of Collections
Initiatives

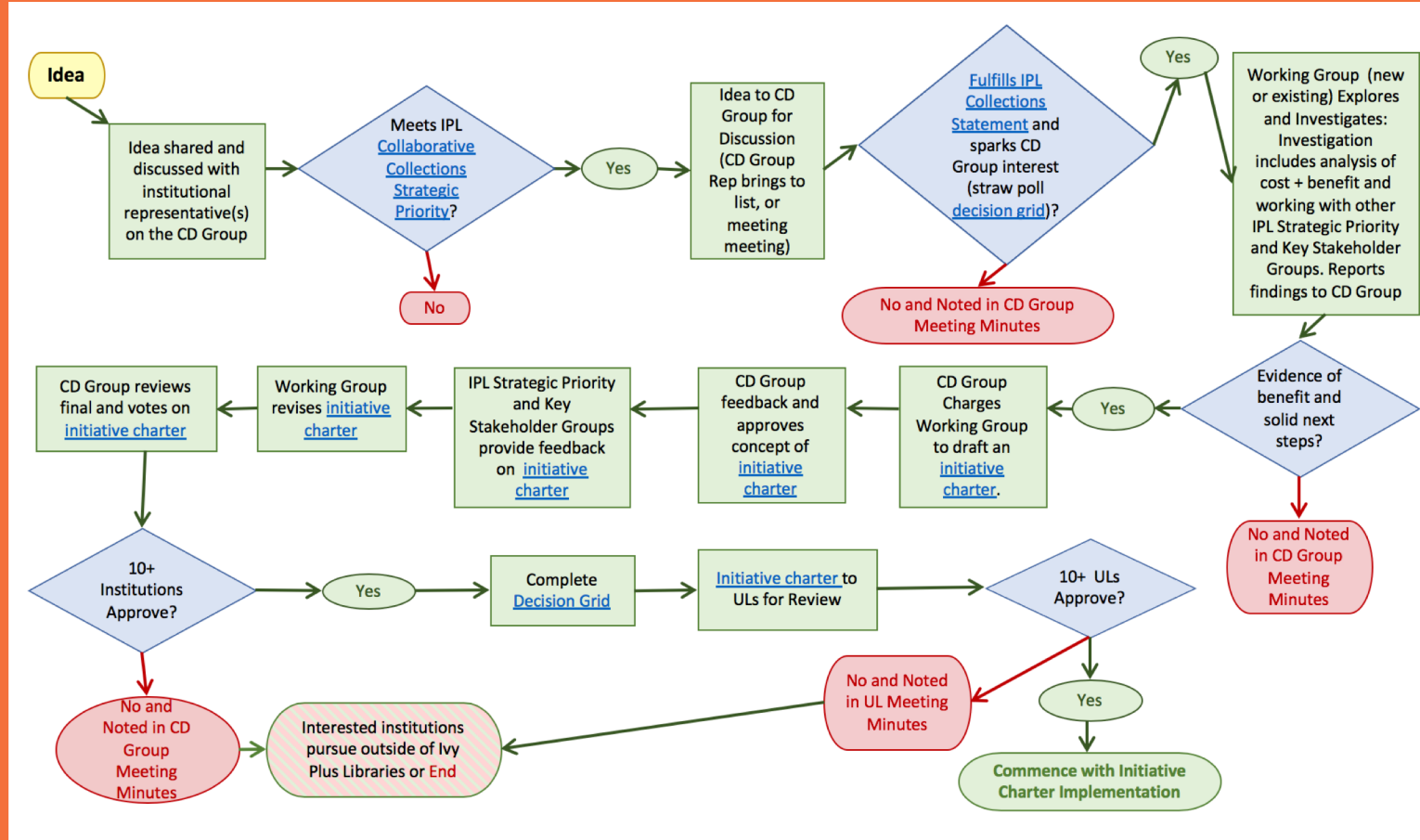
galadriel.chilton@yale.edu



Collection Development Group: Governance



Collection Development Group: From Idea to Initiative



Ivy Plus Web Resources Collecting Program...



Samantha Abrams
Web Resources Collection Librarian
Based @ Columbia

...is a collaborative collection development effort to build curated, thematic collections of freely available, but at-risk, web content in order to support research at participating Libraries and beyond.

Participating Partners

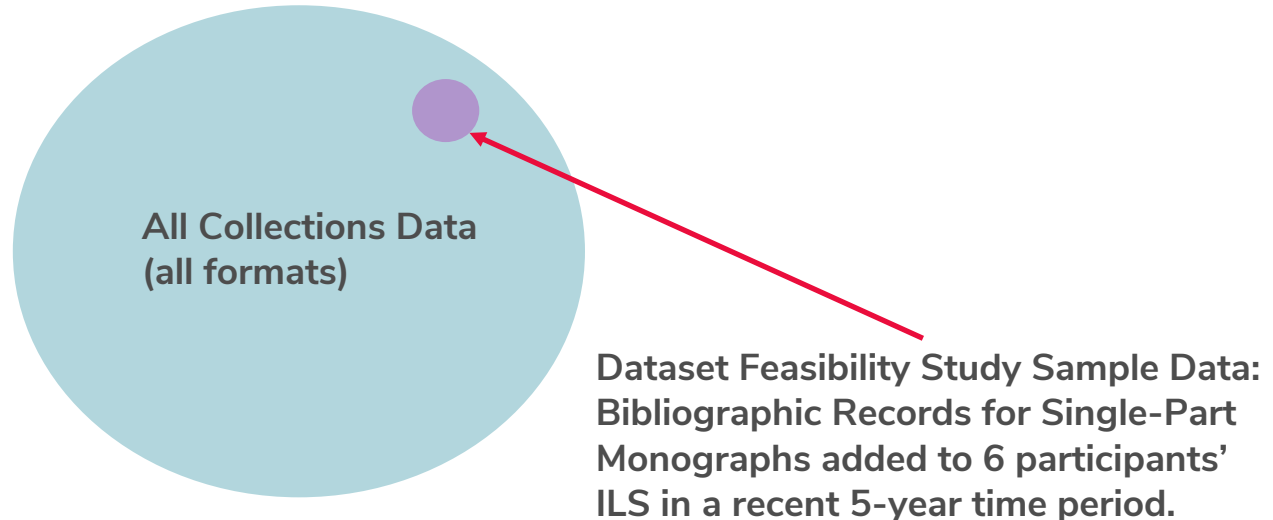
Brown, Chicago, Columbia, Cornell, Dartmouth, Duke, Harvard, Johns Hopkins, Penn, Princeton, and Yale.

2018 Additions

1. National Statistical Offices and Central Banks Web Archive
2. State Elections Web Archive
3. Webcomics Web Archive

Collective Collections Analysis Dataset Feasibility Study

The project will collect, normalize, and analyze a set of bibliographic and holdings records from at least five of the participating institutions for single-part print monographs that have been added to the institutions' catalogs over the 5-year period of 2013-2017. Once the data is available, the Project Task Force will work with local experts in collection development and assessment to test the utility of the data.



Questions?



BorrowDirect

Resource Sharing
Program

90,000,000+

Bibliographic records



270,000 +

Items shared each year

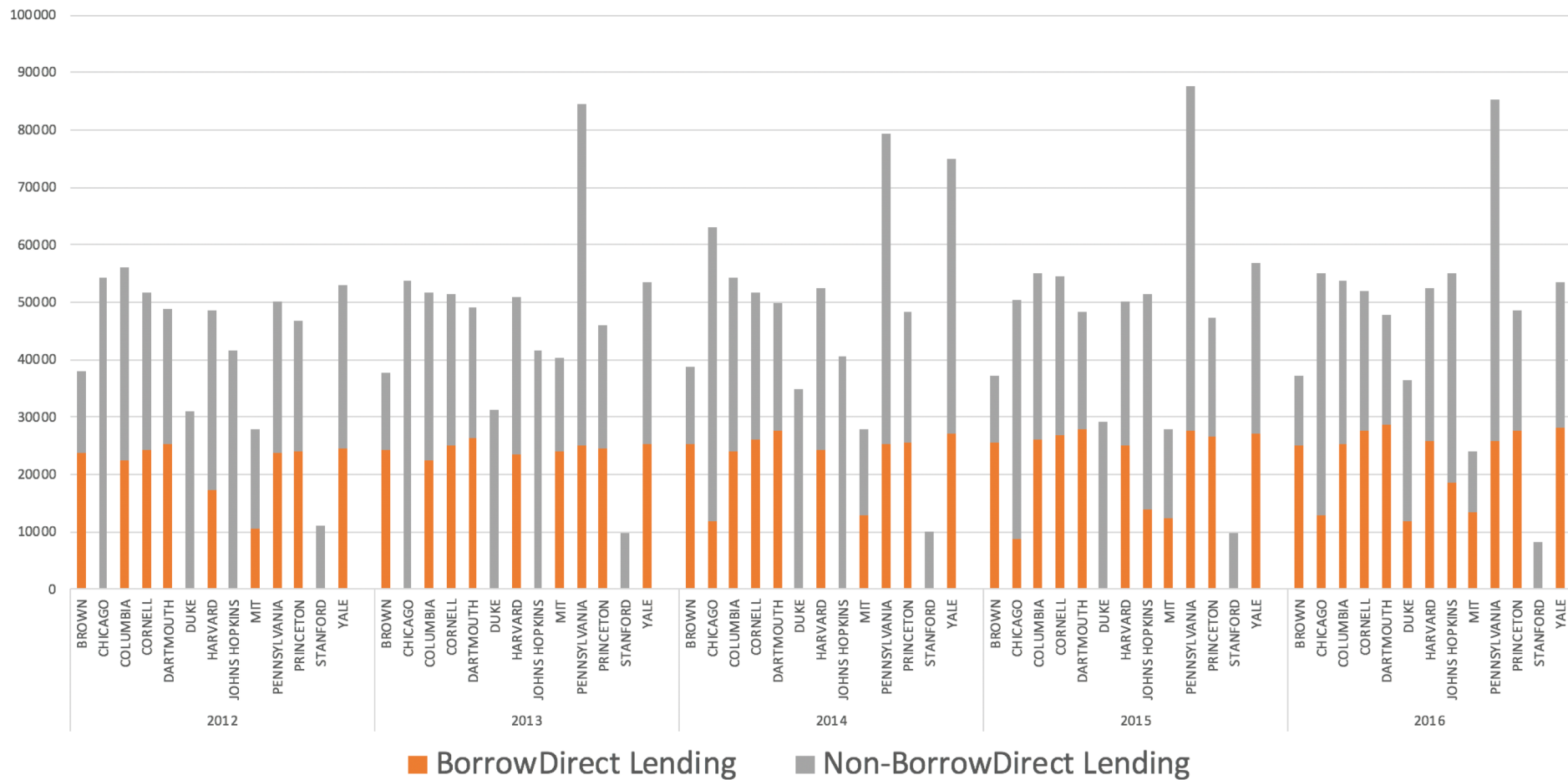


95%

Fill rate



Ivy Plus Resource Sharing **Lending** Since 2012



Shared Index Improving Discovery Infrastructure

What is our goal?

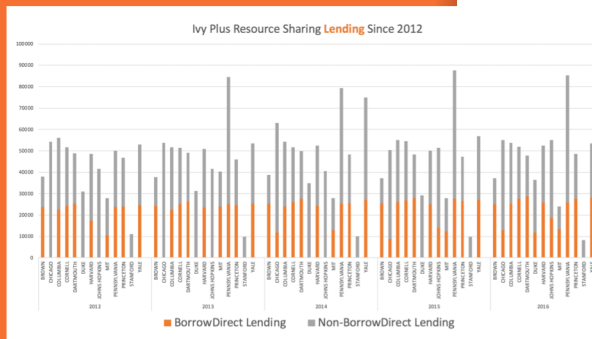
Faster. Sub-second response time.

Better. Improved search results, faceting.

Control. Option to integrate records into local discovery.

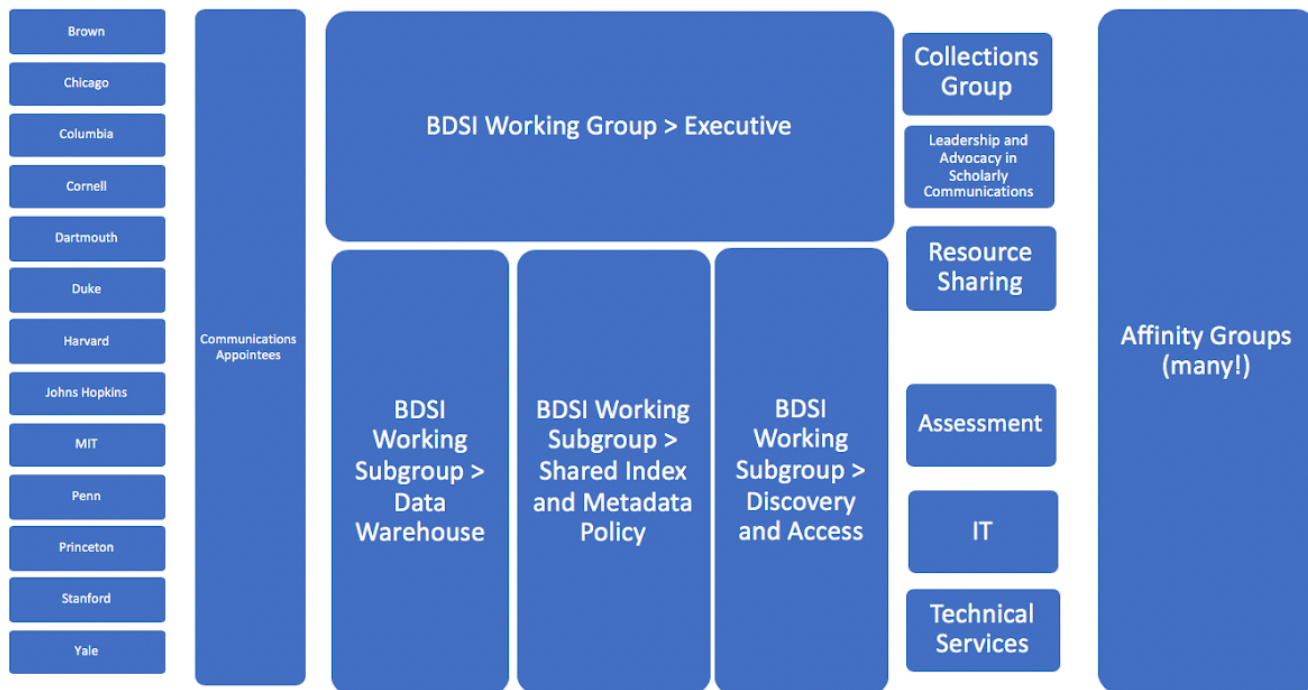
More access options

- Borrow physical item
- Scan section
- Scan whole item
- Access digital
- Use physical item at library



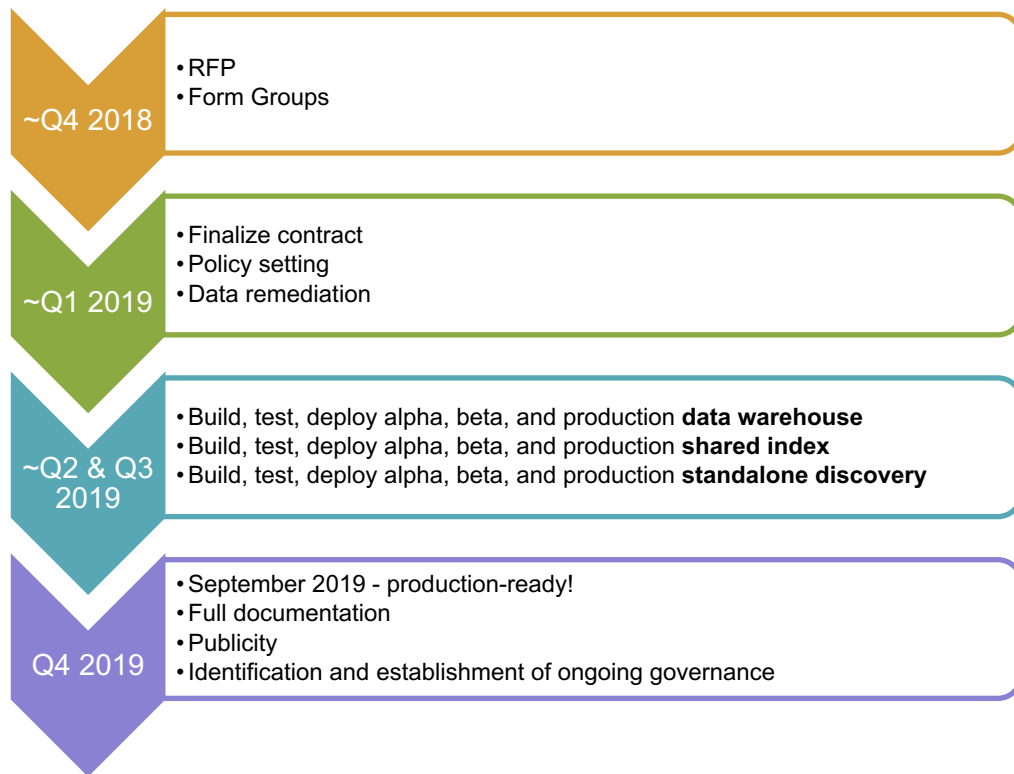
Goal: Improve the user experience of the **orange!**

BorrowDirect Shared Index Groups



Shared Index Improving Discovery Infrastructure

What's our timeline?



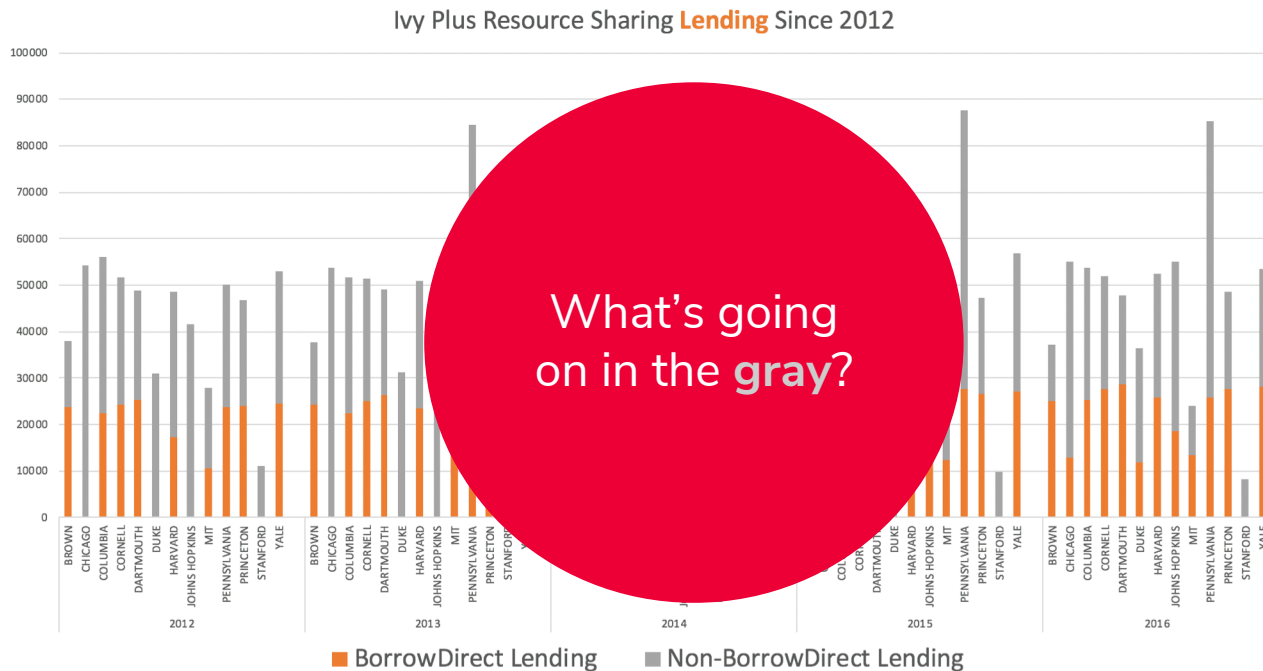
Shared Index Improving Discovery Infrastructure

How to keep informed?

Connect with your library's BDSI Communications Appointee
Attend the monthly Town Halls
Ensure your chair is subscribed to the IPL Chairs and
Conveners list

Resource Sharing Assessment Tool

What is our goal?



“

*What if we were able to use
MetriDoc to create a secure, robust,
user-friendly Resource Sharing data
analysis infrastructure and
visualization service?*

Final Deliverables

~January 2019

Normalized, Secure, Anonymized **Data Set** in MetriDoc

Clear **Documentation** on Data Transformation & Management

Query **Library**

Acceptable Data Usage **Agreement**

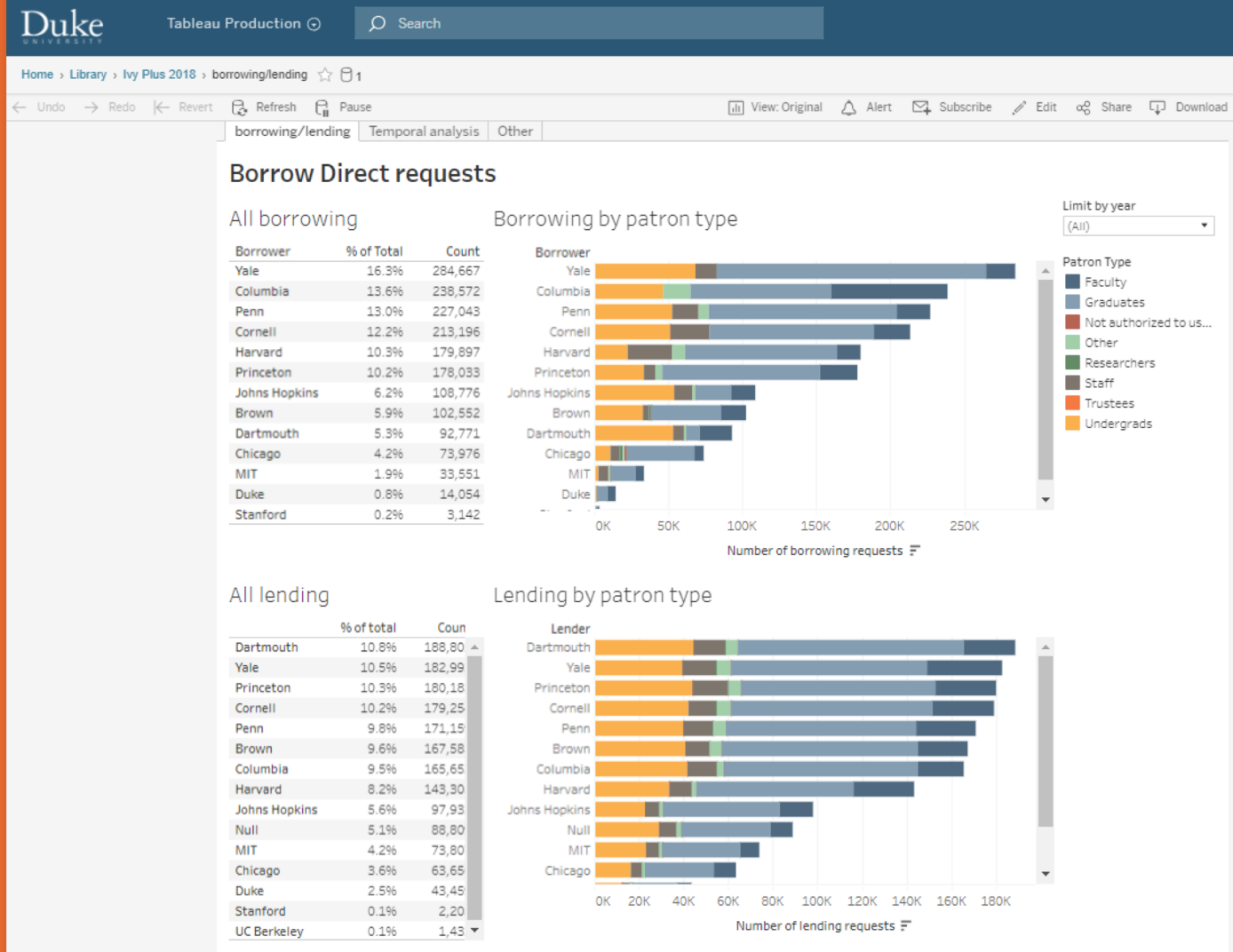
Program **Agreement & Values Statement**

Code in GitHub with Apache License 2.0 (or similar)

- <https://github.com/neomindlabs/metridoc-rails>

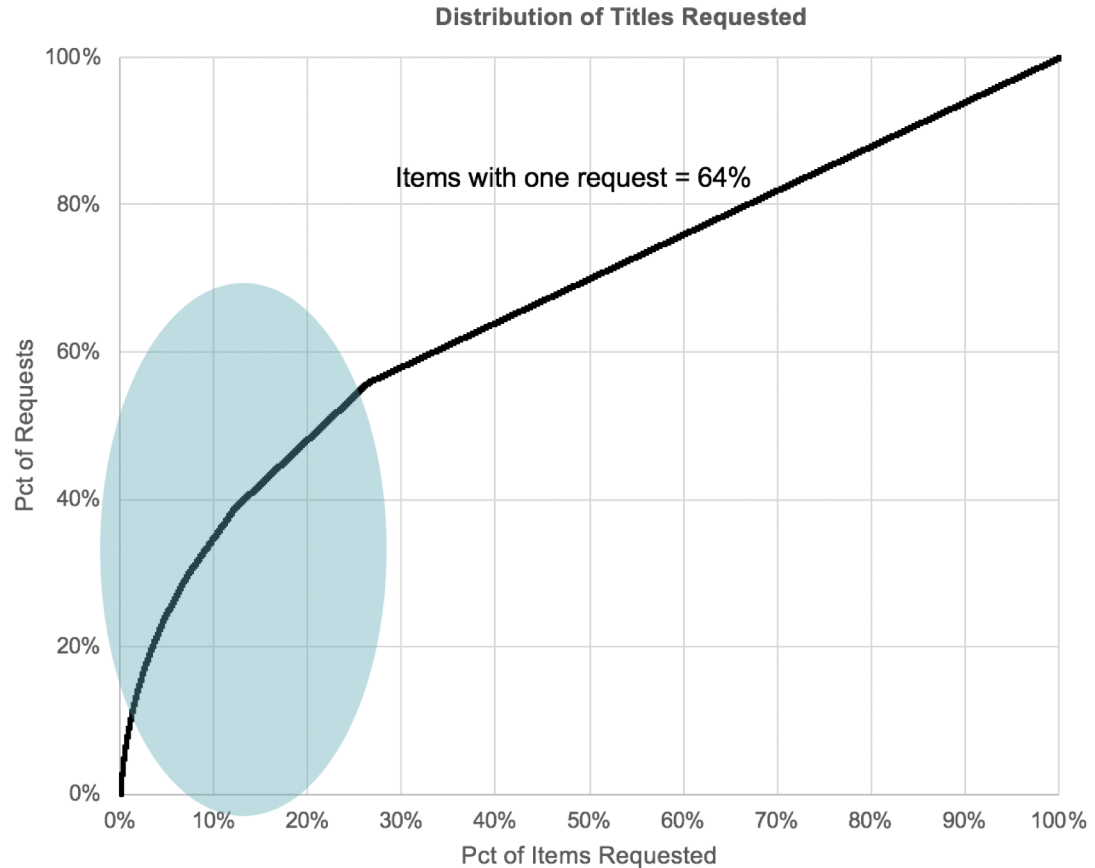
... an ongoing conversation.

Proof of concept image ~macroscopic



Proof of concept image ~microscopic

40% of requests are
for 10% of the items
requested

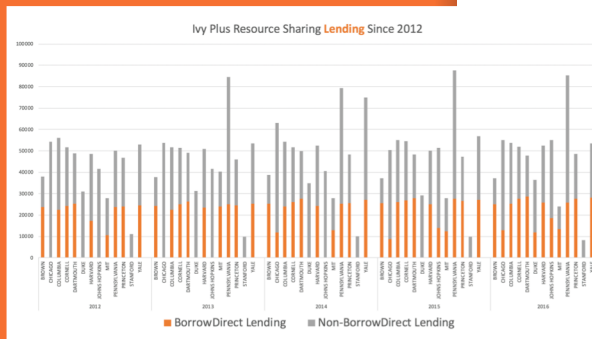


Sharing Special Collections Materials via RS

What? Goals.

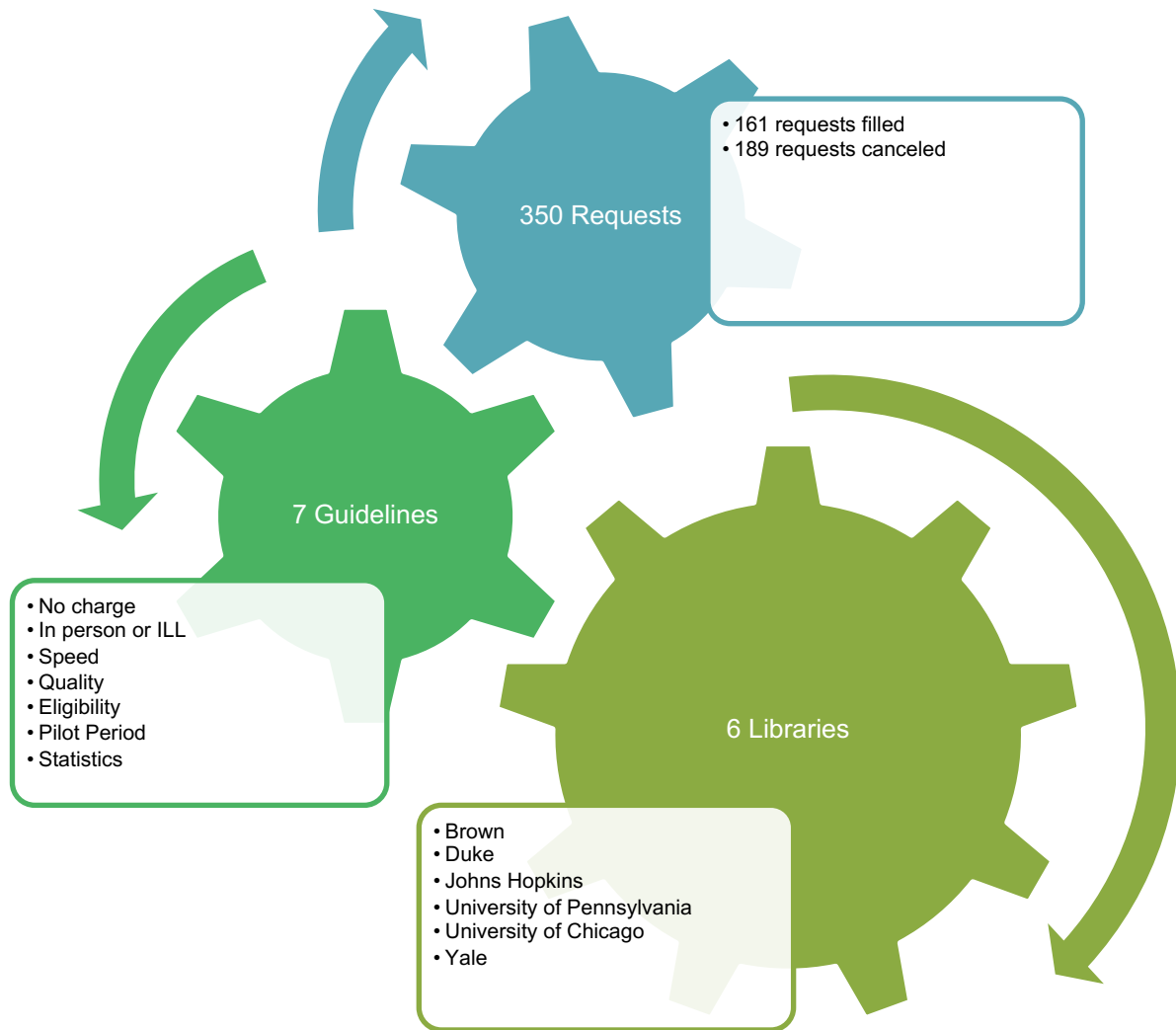
Given the unique research value of Special Collections items, as well as Ivy Plus Libraries' growing efforts to build, extend, and leverage the strength of our collective collections in all areas, formats, and ages across all thirteen libraries, six several Ivy Plus libraries were eager to engage in a pilot to answer the below questions:

- What would happen if we offered this service at **no charge** to Ivy Plus Libraries' users?
- What **workflows** and **policies** would we need to change?
- What is the **actual demand** for this service?
- Do our current **systems** and **staffing levels** support this kind of activity?



Goal: What's not being shared in either the **orange** or the **gray**?

Sharing Special Collections Materials via RS



Sharing Special Collections Materials via RS

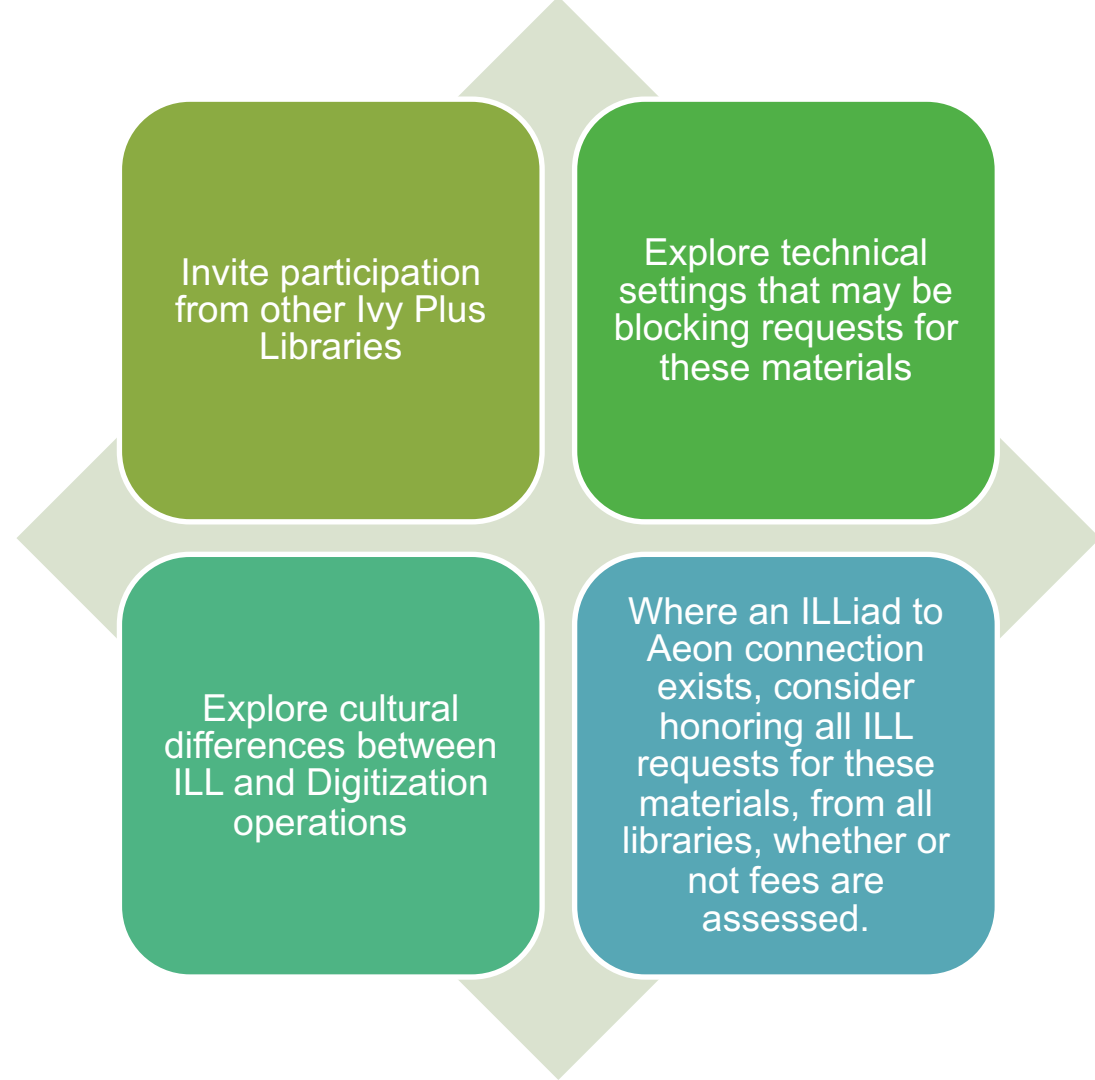
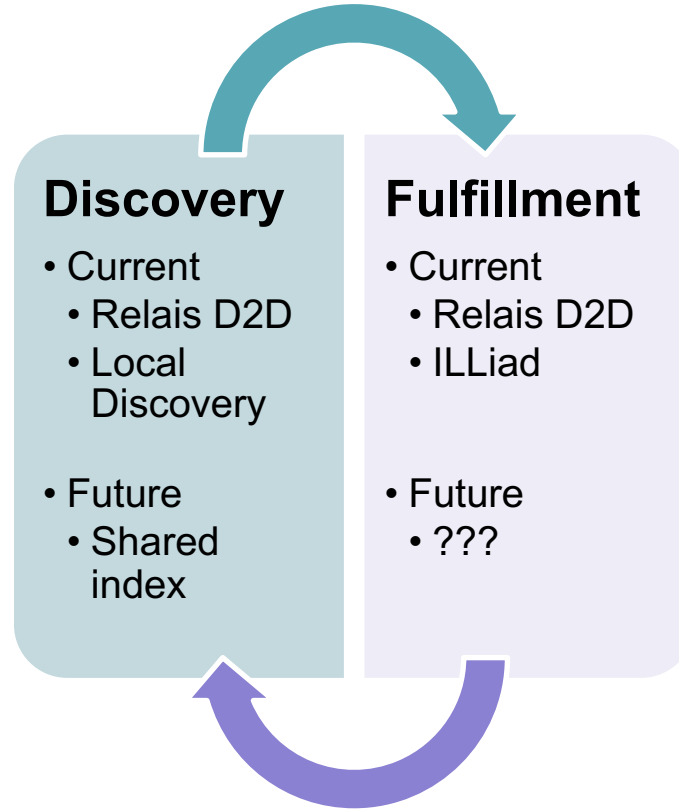


Image of Marian Anderson on Tour

Scanned by Penn
for Harvard user



Fulfillment Platform Replacement





Thank you very much
for your time

If you have any questions about this
presentation or project please don't hesitate to
contact us at:

hnance@upenn.edu

[@ivypluslib](#)



Credits

Special thanks to all the people who made and released these awesome resources for free.

Image “[social network](#)” by SalFalko

Image “[Q](#)” by Vincent Breton

Image of Marian Anderson on tour courtesy of Penn Libraries

Image of Beinecke Libraries by Heidi Nance, taken August 2017.

Image “[A Good Service Just Turned Into Better](#)” by Abu Zafor

Image “[tag team flight](#)” by kyle post

Presentation template by [SlidesCarnival](#)

Photographs by [Unsplash](#)

Learn more about slidedocs at duarte.com/slidedocs