



[www.software.ac.uk](http://www.software.ac.uk)

# Sustainability Evaluation Service

Software Sustainability Institute (SSI)

Caroline Jay: Research Director

Steve Crouch: Research Software Group Lead

Supported  
by:



**BBSRC**

**EPSRC**



Arts & Humanities  
Research Council

Engineering and Physical Sciences  
Research Council

**E·S·R·C**  
ECONOMIC  
& SOCIAL  
RESEARCH  
COUNCIL

**MRC**

Medical  
Research  
Council



Science & Technology  
Facilities Council

**NERC**

SCIENCE OF THE  
ENVIRONMENT

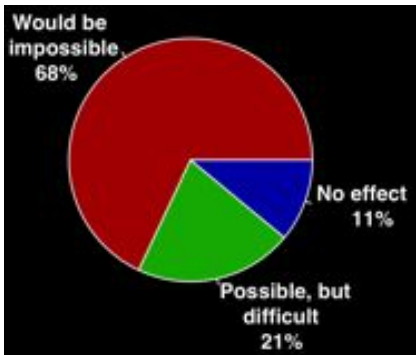
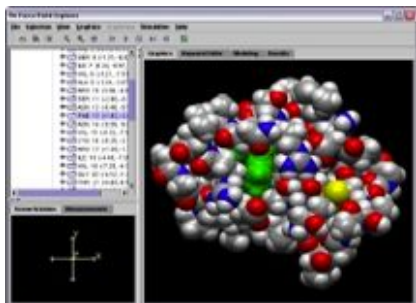
Slides licensed under  
CC-BY where indicated



# Software Sustainability Institute Overview



[www.software.ac.uk](http://www.software.ac.uk)



## Software

70+ project consultancies

200+ evaluations

4 surgeries

## Policy

650+ RSEs engaged

2k signatures

13 issues highlighted

## Outreach

170+ external contributors

20k unique visitors/month

6k+ followers



## Training

100+ Carpentry workshops

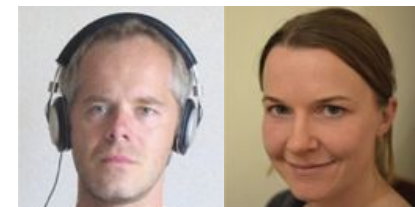
2500+ learners

80+ guides

## Community

129 Fellows

25+ workshops organised



# Software Sustainability Support and Guidance



[www.software.ac.uk](http://www.software.ac.uk)

- Professional evaluation service
- Online evaluation
- Guides and support
- Future priorities



# Consultancy Services



www.software.ac.uk

- Where are the *developers'* concerns?
- Is it ready to be released?
  
- Mini-projects on demand
- 'Open call' projects
- Funded consultancy
  
- Usability evaluation for software
  - User?
  - Developer?



# Online Evaluation



www.software.ac.uk

- Fill in form (15 mins)
- Receive tailored advice
  - Building
  - Installing
  - Testing
  - Documentation
  - Support
  - Portability
  - Contributor policy
  - Copyright
  - Licences

## Q1 - What your software does

Question 1.1: Does your website and documentation provide a clear, high-level overview of your software? \*

- Yes
- No

Question 1.2: Does your website and documentation clearly describe the type of user who should use your software? \*

- Yes
- No

Question 1.3: Do you publish case studies to show how your software has been used by yourself and others? \*

- Yes
- No

## Q2 - Your project's and software's identity

Question 2.1: Is the name of your project/software unique? \*

- Yes
- No

## Q3 - Availability of your software

Question 3.1: Is your software available as a package that can be deployed without building it? \*

- Yes
- No

Question 3.2: Is your software available for free? \*

- Yes
- No

Question 3.3: Is your source code publicly available to download, either as a downloadable bundle or via access to a source code repository? \*

- Yes
- No

Question 3.4: Is your software hosted in an established, third-party repository like GitHub (<https://github.com>), BitBucket (<https://bitbucket.org>), LaunchPad (<https://launchpad.net>) or SourceForge (<https://sourceforge.net>)? \*

- Yes
- No



# Guides and Support



www.software.ac.uk

- Detailed evaluation guides online:
  - Tutorial-based
  - Criteria-based
- Software Management Plans:
  - What software will you write?
  - What infrastructure will you need?
  - Who will use it?
  - What will you release..?



# What Next?



www.software.ac.uk

- Scale up service provision
  - Can we franchise?
  - Can we automate?
- Collaboration
  - Management
  - Governance
- Evidence-based approach





[www.software.ac.uk](http://www.software.ac.uk)

Software evaluation guide:

<https://www.software.ac.uk/resources/guides-everything/software-evaluation-guide>

Online sustainability evaluation:

<https://www.software.ac.uk/resources/online-sustainability-evaluation>

Software management plans:

<https://www.software.ac.uk/software-management-plans>

Research Software Group Lead:

Steve Crouch [s.crouch@software.ac.uk](mailto:s.crouch@software.ac.uk)

Supported  
by:



**BBSRC**

**EPSRC**



Arts & Humanities  
Research Council

Engineering and Physical Sciences  
Research Council

**E·S·R·C**  
ECONOMIC  
& SOCIAL  
RESEARCH  
COUNCIL

**MRC**

Medical  
Research  
Council



Science & Technology  
Facilities Council

**NERC**

SCIENCE OF THE  
ENVIRONMENT

Slides licensed under  
CC-BY where indicated

