

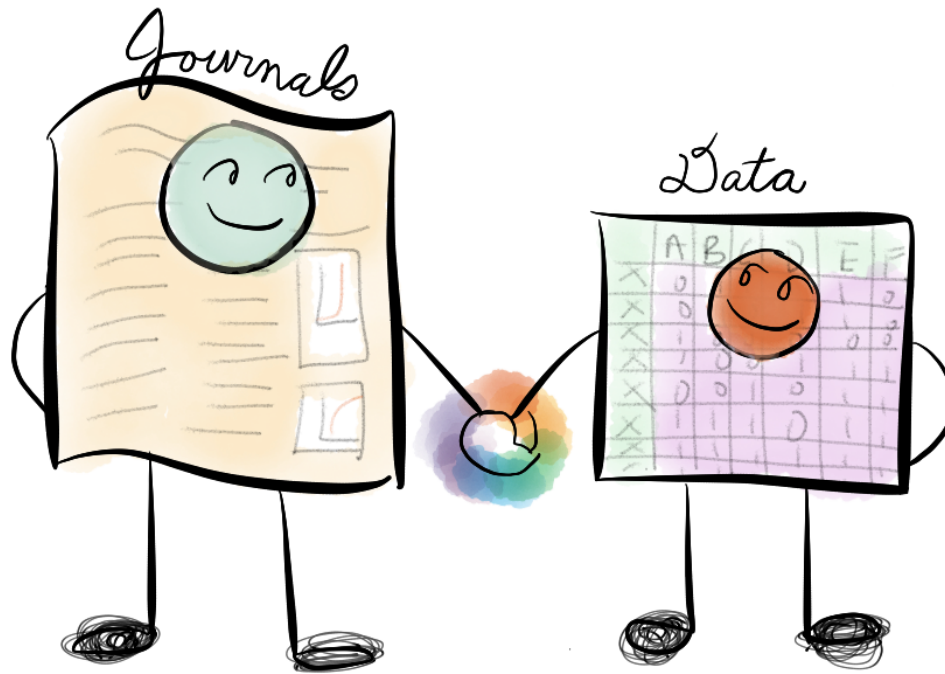
# Helping Journals to Upgrade Data Publications for Reusable Research

Sonia Barbosa (Project Manager)  
Eleni Castro (Project Coordinator)

Institute for Quantitative Social Science (IQSS)  
Harvard University



# Purpose



We propose to enable journals to:

Seamlessly manage the submission, review, and publication of data associated with published articles

The project addresses the needs of journal publishers and editors rather than focusing exclusively on researchers and archivists.

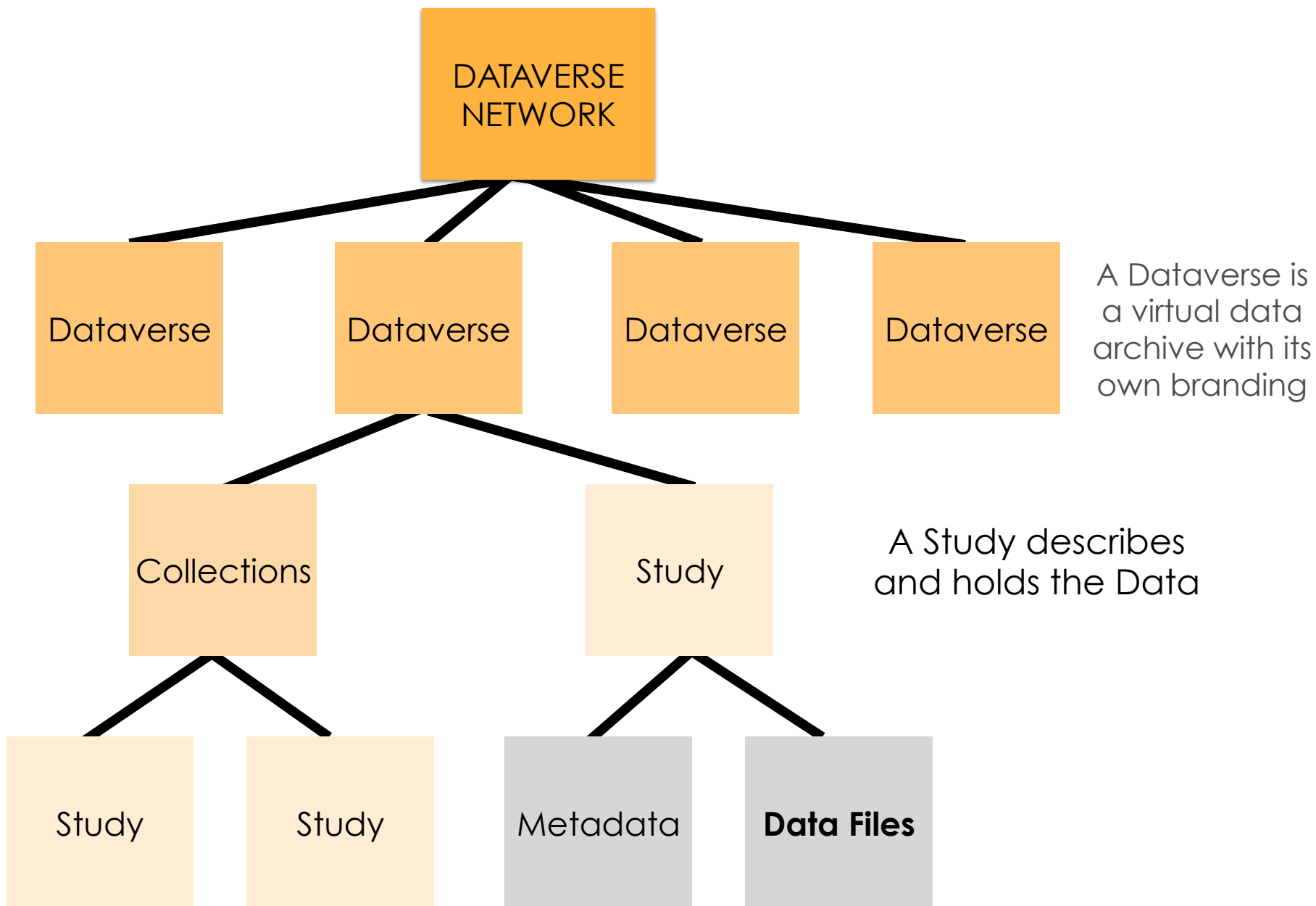
The project focuses on the integration of data into the journal submission and publishing process, rather than on earlier stages of data creation and use.

We plan to do this by integrating two well-established open-source systems:

1. The [Dataverse Network](#) [King 2007; Crosas 2011]
2. [Open Journal Systems](#) (OJS) [Willinsky 2005]

The result will be to increase the **replicability** and **reusability** of published work in social science by improving the infrastructure for, practice of, and incentives related to data publication and citation.

# **The Dataverse Network**





**The Dataverse Network** is a repository for research data that takes care of long term **preservation** and **good archival** practices, while the **researchers and data producers** **keeps control** of and **get recognition** for their data.

# Why Connect Published Work to Data



+

**Data + Metadata +  
Supporting Files**  
(documentation, code)

A screenshot of a data table, likely from a spreadsheet application. It shows a grid of numerical data with multiple columns and rows. The data appears to be organized into several groups or categories, with some cells containing decimal values and others containing integers. The table is displayed within a window that has a menu bar and some toolbars at the top.

=

**A third party** can replicate or reuse,  
thus validate and advance science

## The Centralized Data Repository Provides:

- ✓ Backups and replication of data in different locations (LOCKSS) so data is never lost
- ✓ Re-format for long term accessibility so data never become obsolete
- ✓ Extract Variable Metadata from data sets
- ✓ Universal Metadata standards (DDI, Dublin Core)
- ✓ Inter-operability with other systems through standard protocols (such as OAI-PMH, APIs)

The Dataverse takes care of the archival infrastructure  
("plumbing") for you!



# Open Journal Systems (OJS)

- Open Journal Systems is an [open-source software](#) for the management of [peer-reviewed](#) academic journals, created by the [Public Knowledge Project](#) (PKP), released under the [GNU General Public License](#).
- The [Public Knowledge Project](#) is a non-profit research initiative of the Faculty of Education at the [University of British Columbia](#), the Canadian Centre for Studies in Publishing at [Simon Fraser University](#), the Simon Fraser University Library, and [Stanford University](#).
- focused on the importance of making the results of publicly funded research freely available through [open access](#) policies, and on developing strategies for making this possible. It seeks to **improve the scholarly and public quality of academic research** through the development of innovative online environments.

PKP

---

PUBLIC  
KNOWLEDGE  
PROJECT

# Open Journal Systems

- Provides the technical infrastructure not only for the online presentation of journal articles, but also an entire editorial management workflow, including article submission, multiple rounds of peer-review, and indexing.
- Relies upon individuals fulfilling different roles, such as the Journal manager, editor, reviewer, author, reader, etc. It has a module that supports subscription journals.
- Has a 'plugin' architecture, similar to other community-based projects such as [WordPress](#), allowing new features to be easily integrated without the need to change the entire core code base.
- Open Journal Systems is also [LOCKSS](#)-compliant, helping to ensure permanent archiving for ongoing access to the content of the journal.

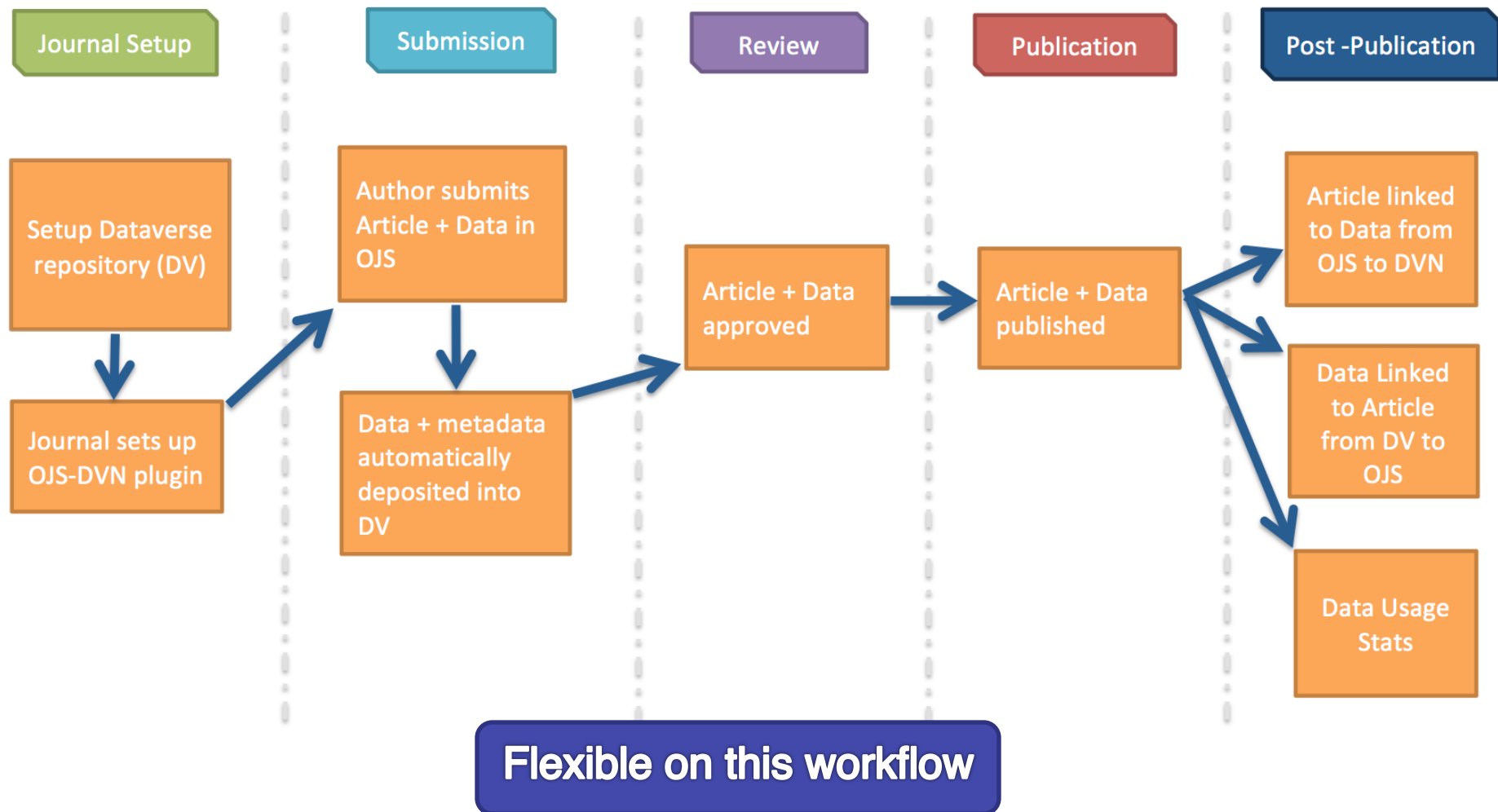
# Progress to-date

Compiled a list of potential journals (~100) that we can work with. Contacted a small handful to be our 1st round of pilot testers. Including:

- Medical, Science & Social Science Publishers
- Academic Publishers

Three publishers reviewed our [plugin workflow](#) and [mockups](#) to provide feedback prior to us beginning development on the technology.

# High-level Plugin Workflow



# Mockup of Data Deposit (in OJS)

## Dataverse Demo Journal

[HOME](#) [ABOUT](#) [USER HOME](#) [SEARCH](#) [CURRENT](#) [ARCHIVES](#)

Home > User > Author > Submissions > **New Submission**

### Step 4. Uploading Data Sets

1. START 2. UPLOAD SUBMISSION 3. ENTER METADATA 4. **UPLOAD DATA SETS** 5. CONFIRMATION

You may provide access to the data sets and other supplementary files related to your research by either uploading them to the journal's dataverse instance, or by linking to the published data if already online.

**Upload your Data**

You may upload any relevant data sets (or other supplementary files) below. These files are stored in a [Dataverse Network](#) specifically for this journal. More information on Dataverse can be found [here](#). Clicking on the link below will open the {DVN Name} website in a new window; you will be returned to this submission once complete.

[Upload to {DVN Name}](#)

**Uploaded files:**

ID	TITLE	ORIGINAL FILE NAME	DATE UPLOADED	ACTION
5	Untitled	19-282-1-PB.pdf	12-11	<a href="#">EDIT</a>   <a href="#">DELETE</a>

**Link to your Data**

Optionally, if your data is already in a Dataverse or other repository, please provide the link below. Please note that for review purposes your data must be published and/or otherwise downloadable.

Link to data:  [Save](#)

**Links:**

<http://example1.com/repo/url123> [edit](#) [delete](#)

<http://example2.com/repo/url456> [edit](#) [delete](#)

<http://example3.com/repo/url789> [edit](#) [delete](#)

[Save and continue](#) [Cancel](#)

[OPEN JOURNAL SYSTEMS](#)  
[Journal Help](#)  
  
**SUBSCRIPTION**  
[My Subscriptions](#)  
  
**USER**  
You are logged in as...  
**pkpadmin**

- [My Journals](#)
- [My Profile](#)
- [Log Out](#)

  
**NOTIFICATIONS**

- [View \(1 new\)](#)
- [Manage](#)

  
**JOURNAL CONTENT**

Search  
  
All  
[Search](#)

  
Browse

- [By Issue](#)
- [By Author](#)
- [By Title](#)
- [Other Journals](#)

  
**FONT SIZE**

[A<sup>+</sup>](#) [A](#) [A<sup>-</sup>](#)

  
**INFORMATION**

- [For Readers](#)
- [For Authors](#)
- [For Librarians](#)

# Published Article + Link to Data

## Dataverse Demo Journal






[HOME](#) [ABOUT](#) [USER HOME](#) [SEARCH](#) [CURRENT](#) [ARCHIVES](#)

Home > Vol 1, No 1 (2012) > **Klockmo**

### Moving toward a recovery-oriented approach in the Swedish mental health system

Carolina Klockmo

#### ARTICLE TOOLS

-  [Print this article](#)
-  [Indexing metadata](#)
-  [How to cite item](#)
-  [Review policy](#)
-  [Email this article](#)
-  [Email the author](#)

#### Data Tools

#### USER

You are logged in as...

**pkpadmin**

- [My Journals](#)
- [My Profile](#)
- [Log Out](#)

#### NOTIFICATIONS

- [View](#) (10 new)
- [Manage](#)

#### JOURNAL CONTENT

Search

All

Search

Browse

- [By Issue](#)
- [By Author](#)
- [By Title](#)
- [Other Journals](#)

#### Reading Tools

 journals.sfu.ca/dataverse/index.php/demo/rt/suppFiles/1/0

#### demo Reading Tools

### Data

#### Moving toward a recovery-oriented approach in the Swedish mental health system

##### 1. Replication data for: Moving toward a recovery-oriented approach in the Swedish mental health system

Type:

Data Citation:

Full Record Available In:

Data Tools:

Data Set

Carolina Klockmo, 2012, "Moving toward a recovery-oriented approach in the Swedish mental health system", [hdl:99999/00000](https://doi.org/10.99999/00000)

[COACTION DATAVERSE NETWORK](#)

[INDEXING METADATA](#)

[ANALYZE](#)

[DOWNLOAD](#)

Close

# Data in the Dataverse

Simon Fraser University Dataverse Network >

POWERED BY THE **Dataverse Network** PROJECT v. 3.2

## Co-Action Dataverse

    [Eleni Castro](#) [Log Out](#)

### REPLICATION DATA FOR: MOVING TOWARD A RECOVERY-ORIENTED APPROACH IN THE SWEDISH MENTAL HEALTH SYSTEM

hdl:TEST/10000

**DRAFT Study Version: 1 – No Released Version**

Created: Thu Dec 20 11:30:31 PST 2012 – Last Updated: Thu Dec 20 11:32:18 PST 2012


- [Edit Cataloging Information](#)
- [Add File\(s\)](#)
- [Edit Study Version Notes](#)
- [Release](#)
- [Permissions](#)
- [Create Study Template](#)
- [Delete Draft Version](#)

#### CATALOGING INFORMATION

[Data & Analysis](#)

[Comments \(0\)](#)

[Versions](#)

 If you use these data, please add the following citation to your scholarly references. [Why cite?](#)

#### Data Citation

Klockmo, Carolina, 2012-12-13, "Replication data for: Moving toward a recovery-oriented approach in the Swedish mental health system", <http://hdl.handle.net/TEST/10000> V1 [Version]

#### Citation Format

[Print](#)

#### Publications

Vulnerable Groups & Inclusion. <http://dx.doi.org/10.3402/vgi.v3i0.18879>

ID: DOI:10.3402/vgi.v3i0.18879

[Link](#)

#### Data Citation Details

Study Global ID	hdl:TEST/10000
Authors	Klockmo, Carolina (Department of Health Sciences, Mid Sweden University)
Production Date	December 13, 2012
Contact	Klockmo, Carolina (Department of Health Sciences, Mid Sweden University), <a href="mailto:carolina.klockmo@miun.se">carolina.klockmo@miun.se</a>
Distribution Date	December 13, 2012
Deposit Date	December 13, 2012
Provenance	Co-Action Dataverse

# What's next?

1. Beginning development of plugin and API ([SWORD2-compliant](#)) this April.
2. Testers (+4) will provide feedback during Summer 2013.
3. OJS+Dataverse teams: Provide guidance on best practices for Data Sharing Policies and Data Citation.



# Project Roadmap

Phase	Description of Phase	Timeframe
1	Conduct outreach to OJS journals/publishers in order to have them test out the OJS-DVN plugin and provide feedback on the workflow for how the OJS-DVN plugin should be set up.	Fall 2012- Winter 2013
2	OJS and DVN teams will begin development work on the plugin	Spring 2013
3	Once the plugin is ready for testing contact group of publishers/journals from Phase 1 in order to test the plugin in a demo journal instance. All the materials needed for testing will be provided.	Summer/Fall 2013
4	Gather feedback from pilot testers to ensure that the plugin works as advertised and is ready to be used in a production setting.	Fall 2013
5	Once testing of the plugin has been completed, the OJS-DVN plugin will be made available for other journals to install and use. Instructions, best practices and other documentation will also be made available.	Fall 2013- Winter 2014
6	API will be available for other Journal Management /Publishing Systems	Spring 2014

# Contacts and Sites

Sonia Barbosa, [sbarbosa@hmdc.harvard.edu](mailto:sbarbosa@hmdc.harvard.edu)

Eleni Castro, [ecastro@fas.harvard.edu](mailto:ecastro@fas.harvard.edu)

Contact for issues/questions on Dataverse:

[dmn\\_support@help.hmdc.harvard.edu](mailto:dmn_support@help.hmdc.harvard.edu)

Web sites:

<http://thedata.org>

<http://projects.iq.harvard.edu/ojs-dvn> (Project specific)

# Thank you!

- [Alfred P. Sloan Foundation](#):  
for generous grant support on this  
project
- Jean Liu: from the [Altmetric blog](#) for  
the “[Journal and Data](#)” illustration

